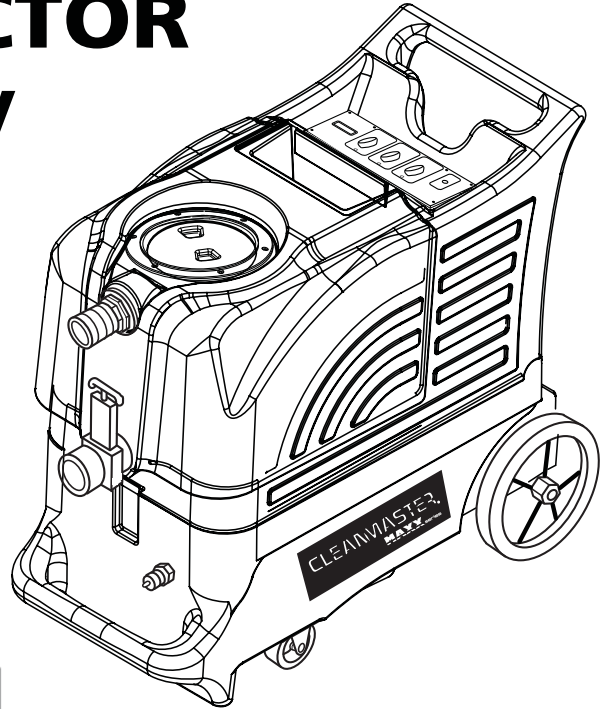


# CLEANMASTER

## 199-610-1200 MAXX 1200 EXTRACTOR 120V

### INFORMATION & OPERATING INSTRUCTIONS



**CAUTION: DO NOT OPERATE MACHINE UNTIL YOU HAVE READ ALL SECTIONS OF THIS INSTRUCTION MANUAL**



#### **IMPROPER USE OF THE MACHINE WILL VOID THE WARRANTY**

1. Always use a defoamer when foaming occurs to prevent vacuum motor damage.
2. Connect the machine to a properly grounded outlet.
3. Keep machine from rain, snow, and extremes in temperatures. Store the machine in a heated location. Use the machine indoors. Do not use outdoors.
4. Use approved chemicals only. NO SOLVENTS.
5. Wear gloves or use rags when removing quick disconnects to prevent burns.
6. Never use water above 130° F/54° C in the solution tank.
7. Never turn on the solution pump without your solution line connected to the machine and the tool.

# IMPORTANT SAFETY INSTRUCTIONS

The Maxx 1200 is only suitable for commercial use, for example in hotels, schools, hospitals, factories, shops, and offices. The Maxx 1200 is not intended for normal residential housekeeping purposes.

**NOTE:** Read all instructions before using this machine.

When using any electrical appliance, basic precautions should always be followed, including the following warnings:

## **WARNING!**

**To reduce the risk of fire, electric shock, or injury:**

- Do not leave the machine unattended when it is plugged in. Unplug the unit from the outlet when not in use and before servicing.
- To avoid electric shock, do not expose to rain or snow. Use and store indoors.
- Do not allow to be used as a toy. Close attention is necessary when used near children.
- Use only as described in this manual. Use only the manufacturer's recommended attachments.
- Never add water over 130° F/54° C to the solution tank.
- Do not use with damaged cord or plug. If the machine is not working as it should, has been dropped, damaged, left outdoors or dropped into water, return it to a service center.
- Do not pull by the cord, use the cord as a handle, close a door on the cord, or pull the cord around sharp edges or corners. Do not run the machine over the cord. Keep the cord away from heated surfaces. To unplug, grasp the plug, not the cord.
- Do not handle the plug, the cord, or the machine with wet hands.
- Extension cords must be 12/3 and no longer than 50 feet. Replace the cord or unplug immediately if the ground prong becomes damaged.
- Do not put any object into openings. Do not use with any opening blocked; keep free of dust, lint, hair, and anything that may reduce air flow.
- Keep loose clothing, hair, fingers, and all parts of body away from openings and moving parts.
- Do not pick up anything that is burning or smoking, such as cigarettes, matches, hot ashes, or any health endangering dusts. Do not use to pick up flammable or combustible liquids such as gasoline or use in areas where these liquids may be present.
- Turn off all controls before unplugging.
- Use extra care when cleaning on stairs.
- Connect to a properly grounded outlet only.
- Liquid ejected at the spray nozzle could be dangerous as a result of its temperature, pressure, or chemical content.
- Never turn on the solution pump without first connecting your solution hose to your machine and to your tool.

## **INSPECTION:**

Carefully unpack and inspect your MAXX 1200 for shipping damage. Each machine is tested and inspected before shipping. Any shipping damage incurred is the responsibility of the carrier. You should notify the carrier immediately if you notice damage to the box, the machine, or its parts.

## **CLEANING SOLUTIONS:**

We recommend liquid cleaning chemicals. Powder chemicals may be used, but unless mixed very thoroughly they could cause a build-up in the pump, lines, and quick disconnects. Any problem caused by a chemical build-up is not covered by warranty. Use a neutral cleaner with a pH between 5 and 10 to avoid premature wear of the pump, seals, and/or other components. It is a good idea to test an inconspicuous area of the floor.

## **MAINTENANCE:**

For optimum performance flush the machine with clear water at the end of each working day. Once a month, minimum, run a flushing compound through the machine to break up any mineral or chemical build-up that may have formed. The vacuum motor and the pump do not require any scheduled maintenance; however, the motor may require replacement brushes after 1000 - 1500 hours. Clean the body with an all-purpose detergent, and protect it with an automobile interior polish. Lubricate the wheels, castors, and quick disconnects with an all purpose silicone spray.

## **PARTS AND SERVICE:**

Repairs, when required, should be performed by your authorized distributor who maintains an inventory of original replacement parts and accessories. Call the distributor from whom you purchased this machine if you need parts and service. Be sure to specify the machine model. Have your serial number handy.

Contact Info:           CleanMaster Corporation  
                                  11015 47th Ave. West  
                                  Mukilteo, WA 98275  
                                  Toll free: 1-800-426-8972  
                                  Phone: 425-775-7272  
                                  Fax: 425-771-7156

**Serial Number:** \_\_\_\_\_

**Model:** MAXX 1200

**Purchase Date:**\_\_\_\_\_

**Write the name and phone number of your  
distributor:** \_\_\_\_\_

\_\_\_\_\_

## SWITCH PLATE

### MODEL (1):

This identifies the model of your Maxx machine.

### VACUUM SWITCH (2):

This push-button switch turns on the vacuum. The switch will illuminate when it is on.

### AUTO PUMP OUT SWITCH (3):

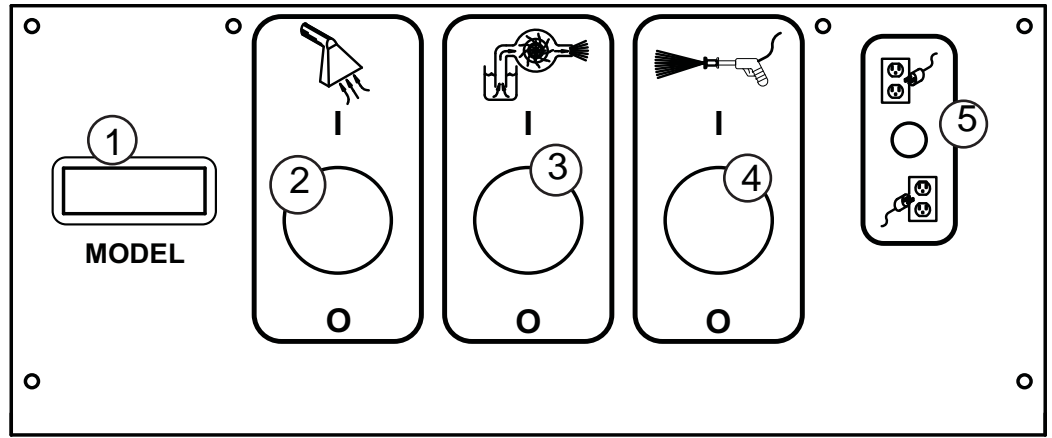
This switch will turn on the automatic pump-out pump, and it will illuminate when it is activated.

### SOLUTION PUMP SWITCH (4):

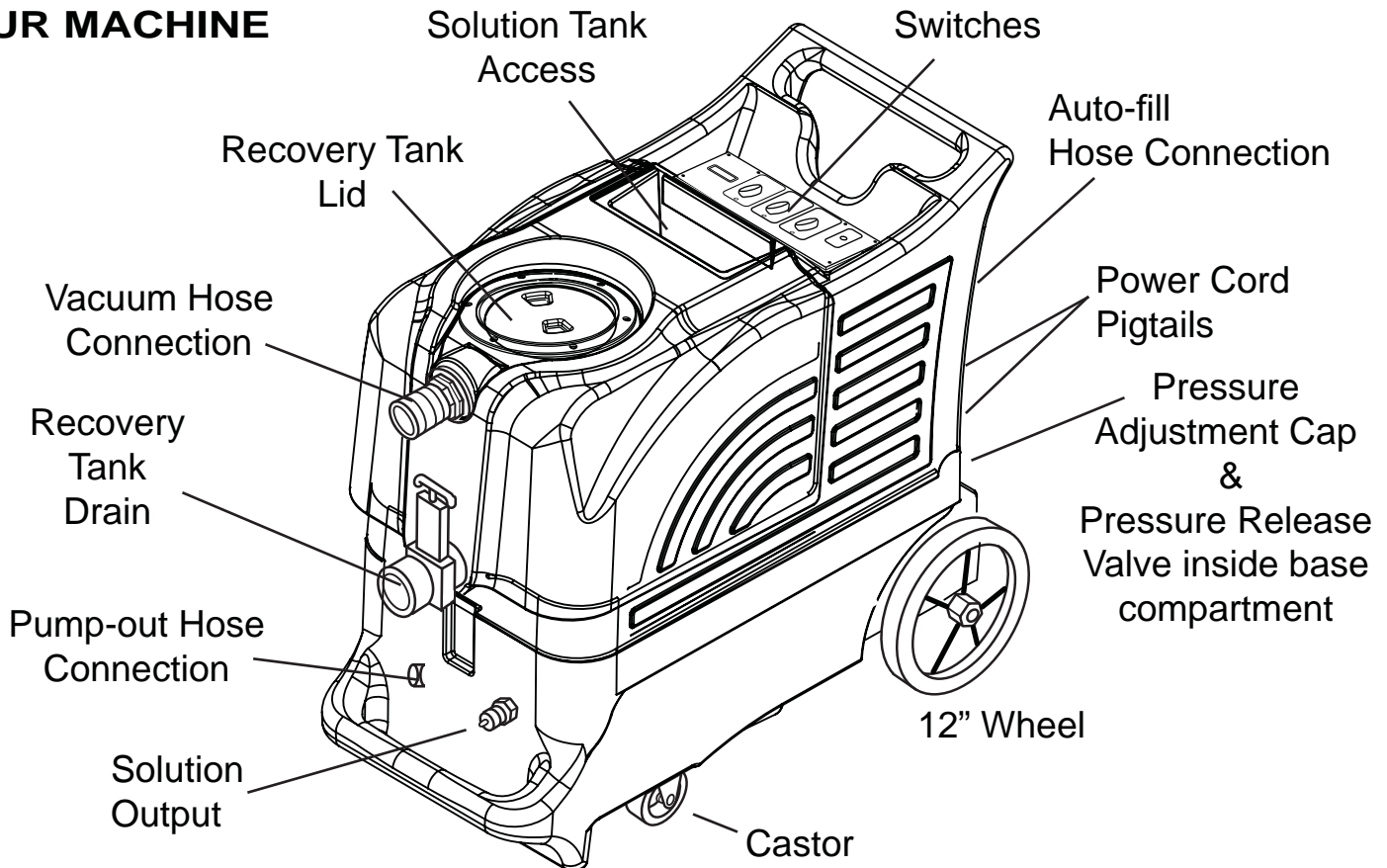
The solution pump switch will turn on the 1200 psi pump, and it will illuminate when it is activated. The output pressure of this pump is adjustable through the unloader valve. Refer to the drawing below, and to the Operation Instructions.

### GREEN, TWO CIRCUIT INDICATOR (5):

This light will automatically turn on when you have plugged the two power cords into separate circuits. If this light does not turn on, try other outlets with one of the cords until the light does turn on. **NOTE:** All systems in the machine will operate if this light does not turn on, but you may trip a circuit breaker in the wall.



## YOUR MACHINE



## OPERATION

REFER TO THE DIAGRAMS ON THE PREVIOUS PAGES

### **PREPARATION FOR USE:**

1. Before each use, inspect the machine, hoses, and cleaning tools for cleanliness and completeness.  
Make sure hoses are in good condition and the spray nozzle(s) is tight.
2. If not using the auto-dump feature, just make sure the brass cap is on the drain hose connector on the front of the base of the machine.

If you choose to use the auto-dump feature, remove the brass cover on the hose connector on the front of base of the machine, attach a hose, and place the open end of the hose in a drain. Make sure the recovery tank drain gate is closed, and the lid is tight on the recovery tank.

3. If you choose not to use the auto-fill feature, just **fill** the tank with water and cleaning chemical. Follow chemical directions regarding dilution and mixing. Do not use harsh chemicals; they may damage seals in pumps and valves, and cause the pump to wear prematurely. .

If you choose to use the auto-fill feature, connect the fill hose to the auto-fill connector (located over the solution tank fill hole). Turn on the water source -- HIGH PRESSURE IS NOT NECESSARY -- and allow the tank to fill with water. When using the auto-fill system, the auto-fill float will automatically turn on and turn off as the tank empties and then fills.

**NOTE:** Never put water with a temperature exceeding 130 ° F / 54 ° C in the solution tank

4. Pre-spray the area to be cleaned, with a pump-up sprayer, while the tank is filling. Follow chemical directions.
5. Plug in the two power cords. Do not connect both cords to the same outlet. The green, 'separate circuit locator light (1) on the switch plate should light up. If the locator light does not come on, check the circuit breaker box in the wall, and/or try different outlets until it does turn on. Although all systems in the machine may work correctly if you are not on two circuits, a circuit breaker in a wall panel may trip. If you make sure the green light is turned on, you will prevent tripped circuit breakers.

**CAUTION -- NEVER TURN ON THE SOLUTION PUMP BEFORE CONNECTING YOUR SOLUTION LINE TO YOUR MACHINE AND TO YOUR TOOL. If the pump builds pressure before you connect the hose and tool, you will not be able to connect them.**

6. Prime the 1200 psi pump: fill the solution tank with water, if not already done, and turn on the pump. You may notice a 'tone' change in the sound of the pump (smoother, with less of a rattle).
7. **Use defoamer to prevent foam.**
8. Attach the solution spray hose to the solution quick disconnect. Attach the vacuum hose to the hose barb on the front of the recovery tank. Connect the other ends of the hoses to the tool.
9. Turn on the vacuum (2) and turn on the dump pump (3). Begin spraying.
10. When the job is finished, turn off the water source. Vacuum the remaining solution from the solution tank into the recovery tank.
11. Run a few gallons of clean water through the system. Drain the recovery tank by opening the drain gate over a bucket or drain. Disconnect the hoses from the cleaning tool, and reel them up onto the hose spool.
12. Unplug the power cords.
13. Clean the machine and the tool. Never store your machine outside, and keep it from extremes in temperatures.

## **AUTO-FILL**

### **1 Operation:**

- Attach a 3/4" garden hose to the auto-fill valve, and connect the other end of the hose to your water source.
- Make sure the float that hangs from the auto-fill valve into the tank is free of obstruction and can move freely.
- Turn the water supply on.
- As the tank fills, the chemical concentrate will be drawn from the chemical container, will pass through the clear tubing to the valve, and will be mixed into the water stream.
- The auto-fill float will automatically shut-off the flow of incoming water when the solution tank is nearly full, and it will allow the valve to open again once the water level has dropped to a predetermined level.

## **AUTO-DUMP**

### **1 Operation:**

- **Before each use:** if necessary, unscrew the stainless steel filter at the bottom of the recovery tank and clean it. Also make sure the float in the recovery tank is clean.
- Attach a 3/4" garden hose to the dump pump outlet fitting on the back of the base of the machine.
- Run the other end of the hose into a drain.
- Turn ON the dump pump switch (switch is located on the switch panel on the top of the machine).
- **NOTE:** the dump pump is 'self-priming.' You should see water start to flow within 30 seconds of the pump turning on. If water does not begin to flow, check the filter to see if it is plugged with debris.
- **After each job:** run clear water through the dump pump to wash out any chemical residue. Remove and clean the stainless steel filter in the back of the tank. Reinstall the filter once it is clean. Clean and empty the recovery tank.



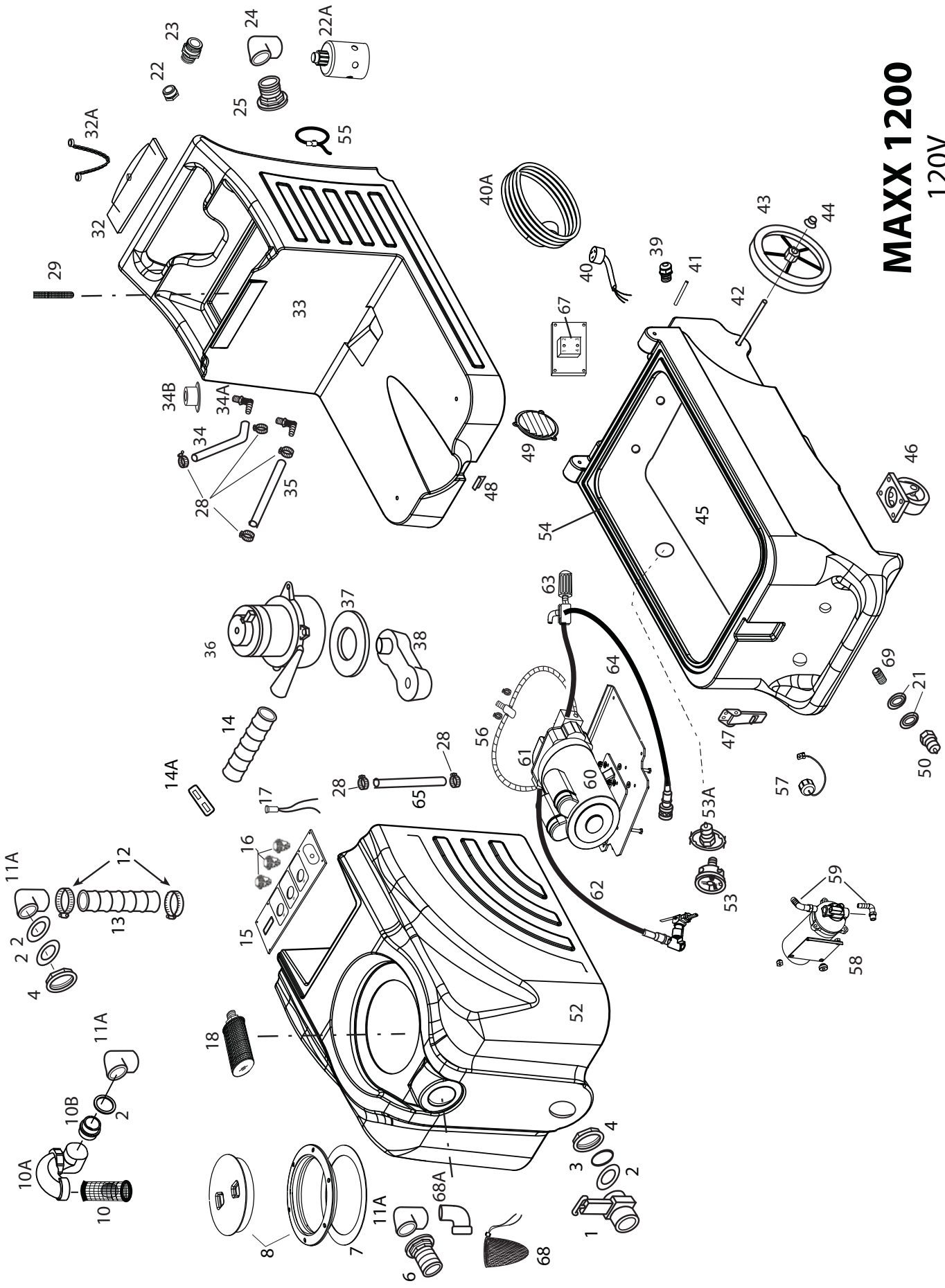
**DANGER: DO NOT USE SOLVENTS, OR ANY CHEMICALS THAT MAY BE FLAMMABLE, EXPLOSIVE, OR COMBUSTIBLE.**

**CAUTION: always use a defoamer in the recovery tank to prevent water or foam from entering the vacuum motor.**

**CAUTION: Use care when handling hazardous chemicals.**

**CAUTION: Never leave the 1200 psi pump running when you are not actively using it.**

**CAUTION: Never put water hotter than 130 °F / 54 °C in the holding tank.**



**MAXX 1200**  
**120V**  
 6.24.2009

# MAXX-1200

## PART LIST

120V

<u>ITEM</u>	<u>PART No</u>	<u>DESCRIPTION</u>	<u>ITEM</u>	<u>PART No</u>	<u>DESCRIPTION</u>
1	903	Drain Gate	37	2013	Gasket, vacuum
2	187	O-ring	38	MA-6	Manifold, vacuum
3	187B	Washer, rubber	39	230	Retainer, cord pigtail
4	185	Nut, 1-1/2"	40	2155	Pigtail, power cord
6	907	Hose Barb, vacuum inlet	40A	2154	Power cord, 25 ft
7	1074	Gasket	41	801	Hinge pin
8	2086A	Lid with Ring, 6"	42	910-18.63	Axle rod, 18.63"
10	929B	Ball Float, vac shut-off	43	2092	Wheel, 12 inch
10A	1154A	Adapter, ABS trap	44	27A	Axle cap
10B	1154	Adapter, ABS	45	FP627	Base, complete
11A	922	Elbow, PVC, fpt	46	905	Castor
12	156	Hose Clamp	47	908	Latch
13	430	Hose, vacuum, 2" ID X 27"	48	909A	Catch, for latch
14	430A	Hose, vacuum, 2" ID X 14.5"	49	459	Louver, 2-1/2"
14A	4404C	Bar, vacuum hose hold-down	50	45	Quick disconnect
15	2167 + 2167-1200	Switch plate, Advantage	52	VT-33	Recovery tank
16	1623R	Switch, push-button, ON/OFF	53	2166	Pressure gauge
17	227	Green light	53A	219	Quick disconnect
18	2069B	Filter, inlet 30 mesh	54	2050	Gasket, around top of base, 78.5"
21	31	Washer, brass	55	1603	Strap, cord wrap
22	1184	Adaptor, garden hose	56	FP630	Hose, pump intake
22A	1310A	Valve, auto-fill,	57	1060C	Plug, drain hose
23	1533	Connector, hose	58	2067	Pump, dump
24	1534	Elbow, 1" M X F 90°	59	1546	Hose barb, two per bag
25	1571	Reducer, 1" x 1/2" M X F	60	FP636	Motor, no pump
28	166	Hose clamp	61	FP___	Pump, complete, no motor
29	1557A	Screen, filter	62	FP632	Hose, unloader to outlet
32	2175	Lid, Solution tank	63	FP633	Unloader valve assembly
32A	805	Chain, 8"	64	FP631	Hose, pump to gauge
33	TKC-9	Solution tank	65	946	Hose, dump pump inlet, 32"
34	946	Hose, pump inlet, 1/2" ID X 15"	67	4405A	Relay, 25 AMP
34A	2176	Elbow, 1/2" ID, 90°	68	FP619	Pre-filter bag
34B	2177	Grommet, rubber	68A	1140	Elbow
35	925	Hose, pump bypass, 3/8" ID X 15"	69	92A	Nipple, s/s
36	408G	Vacuum, 3-stage			

### Miscellaneous parts and Assemblies

FP618	Pump and motor, complete
1160K	Pump rebuild kit, valves & o-rings
1160A	Pump rebuild kit, plunger and seals

## MAINTENANCE SCHEDULE

	DAILY	WEEKLY	MONTHLY	YEARLY	OTHER
CLEAN ALL FILTERS	X				
CHECK POWER CORD	X				
FLUSH OUT with DESCALER			X		
REPLACE VAC MOTOR BRUSHES					Around 1500 hours
REPLACE PRESSURE REGULATOR				X	Or as needed
REBUILD PUMP					Around 1500 hours

## TROUBLE SHOOTING:

### IF THIS OCCURS

### CHECK THIS

NO SPRAY	Solution tank is empty. Clogged spray tip. Pump not running or not primed. Valve on wand not operating.
LOW SUCTION	Debris is plugging cleaning tool or vacuum hose. Drain hose is not completely closed. Vacuum tank lid is not closed or seal is damaged.
NO SUCTION	No power to motor. Test the switch. Test the vacuum motor.
LOW HEAT	Spraying too long. Try spraying for 8 - 10 seconds, or about three strokes. Heat exchanger needs to be flushed. Wrong tool being used. Too much water passing through. Longer hose or larger diameter hose, than standard.
NO HEAT	Heat is not turned on. No power in the wall outlet - check to see if the breaker has tripped.  No power to the heat switch - check wiring for 'opens.' No power out of heat switch, follow troubleshooting steps to isolate the problem. Call your distributor for additional help.

# MAXX 1200

## SPECIFICATIONS:

Rotomolded Body:	Lifetime Warranty
Vacuum:	One, 3-stage
VAC Shutoff:	Ball Float
Water lift:	137"
Pump:	1200 PSI, positive displacement, adjustable
Weight:	110 lbs.
Dimensions:	18W x 38L x 34.5H (inches)

## NOTES: