

CLEANMASTER

100-610-101

MAXX-100 Single Cord

EXTRACTOR

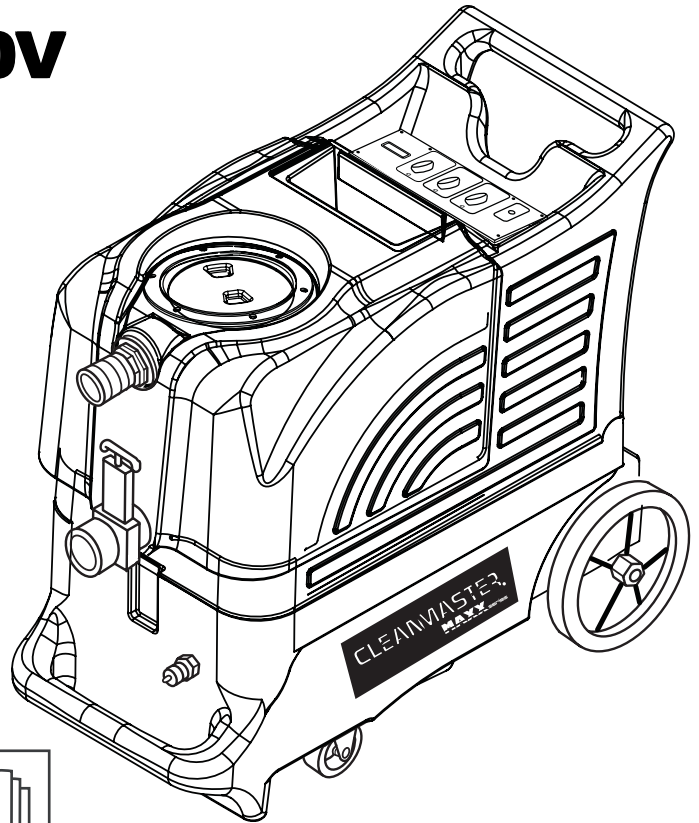
120V

INFORMATION

&

OPERATING

INSTRUCTIONS



CAUTION: DO NOT OPERATE MACHINE UNTIL YOU HAVE READ ALL SECTIONS OF THIS INSTRUCTION MANUAL



IMPROPER USE OF THE MACHINE WILL VOID THE WARRANTY

1. Always use a defoamer when foaming occurs to prevent vacuum motor damage.
2. Connect the machine to a properly grounded outlet.
3. Keep machine from rain, snow, and extremes in temperatures. Store the machine in a heated location. Use the machine indoors. Do not use outdoors.
4. Use approved chemicals only. **NO SOLVENTS.**
5. Wear gloves or use rags when removing quick disconnects to prevent burns.
6. Never use water above 130° F/54° C in the solution tank.

IMPORTANT SAFETY INSTRUCTIONS

The Maxx 100 is only suitable for commercial use, for example in hotels, schools, hospitals, factories, shops, and offices. The Maxx 100 is not intended for normal residential housekeeping purposes.

NOTE: Read all instructions before using this machine.

When using any electrical appliance, basic precautions should always be followed, including the following warnings:

WARNING!

To reduce the risk of fire, electric shock, or injury:

- Do not leave the machine unattended when it is plugged in. Unplug the unit from the outlet when not in use and before servicing.
- To avoid electric shock, do not expose to rain or snow. Use and store indoors.
- Do not allow to be used as a toy. Close attention is necessary when used near children.
- Use only as described in this manual. Use only the manufacturer's recommended attachments.
- Never add water over 130° F/54° C to the solution tank.
- Do not use with damaged cord or plug. If the machine is not working as it should, has been dropped, damaged, left outdoors or dropped into water, return it to a service center.
- Do not pull by the cord, use the cord as a handle, close a door on the cord, or pull the cord around sharp edges or corners. Do not run the machine over the cord. Keep the cord away from heated surfaces. To unplug, grasp the plug, not the cord.
- Do not handle the plug, the cord, or the machine with wet hands.
- Extension cords must be 12/3 and no longer than 50 feet. Replace the cord or unplug immediately if the ground prong becomes damaged.
- Do not put any object into openings. Do not use with any opening blocked; keep free of dust, lint, hair, and anything that may reduce air flow.
- Keep loose clothing, hair, fingers, and all parts of body away from openings and moving parts.
- Do not pick up anything that is burning or smoking, such as cigarettes, matches, hot ashes, or any health endangering dusts. Do not use to pick up flammable or combustible liquids such as gasoline or use in areas where these liquids may be present.
- Turn off all controls before unplugging.
- Use extra care when cleaning on stairs.
- Connect to a properly grounded outlet only.
- Liquid ejected at the spray nozzle could be dangerous as a result of its temperature, pressure, or chemical content.

INSPECTION:

Carefully unpack and inspect your MAXX-100 Single Cord for shipping damage. Each machine is tested and inspected before shipping. Any shipping damage incurred is the responsibility of the carrier. You should notify the carrier immediately if you notice damage to the box or to the machine or parts.

CLEANING SOLUTIONS:

We recommend liquid cleaning chemicals. Powder chemicals may be used, but unless mixed very thoroughly they could cause a build-up in the pump, lines, heat exchanger and/or quick disconnects. Any problem caused by a chemical build-up is not covered by warranty. Use a neutral cleaner with a pH between 5 and 10 to avoid premature wear of the pump, seals, and/or other components.

MAINTENANCE:

For optimum performance flush the machine with clear water at the end of each working day. Once a month, minimum, run a flushing compound through the machine to break up any mineral or chemical build-up that may have formed. The vacuum motor and the pump do not require any scheduled maintenance; however, the motor may require replacement brushes after 1000 - 1500 hours. Clean the body with an all-purpose detergent, and protect it with an automobile interior polish. Lubricate the wheels, castors, and quick disconnects with an all purpose silicone spray.

PARTS AND SERVICE:

Repairs, when required, should be performed by your authorized distributor who maintains an inventory of original replacement parts and accessories. Call the distributor from whom you purchased this machine if you need parts and service. Be sure to specify the machine model. Have your serial number handy.

Contact Info: CleanMaster Corporation
 11015 47th Ave. West
 Mukilteo, WA 98275
 Toll free: 1-800-426-8972
 Phone: 425-775-7272
 Fax: 425-771-7156

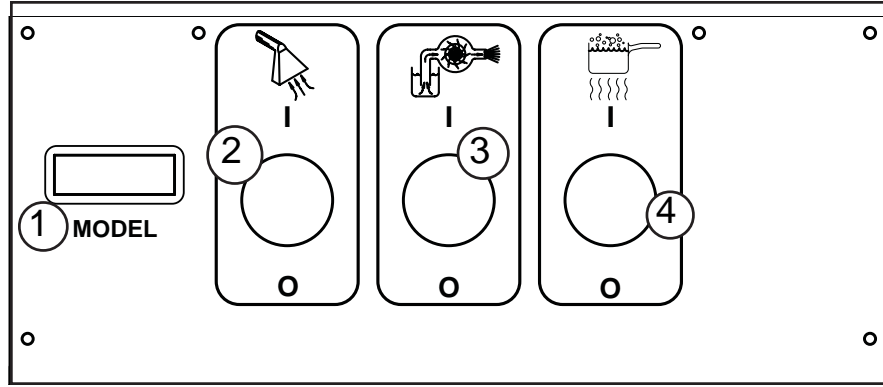
Serial Number: _____

Model: **MAXX-100-SINGLE CORD**

Purchase Date:_____

Write the name and phone number of your distributor:

SWITCH PLATE



MODEL (1):

This identifies the model of your Maxx machine.

VACUUM SWITCH (2):

This push-button switch turns on the vacuum. The switch will illuminate when it is on.

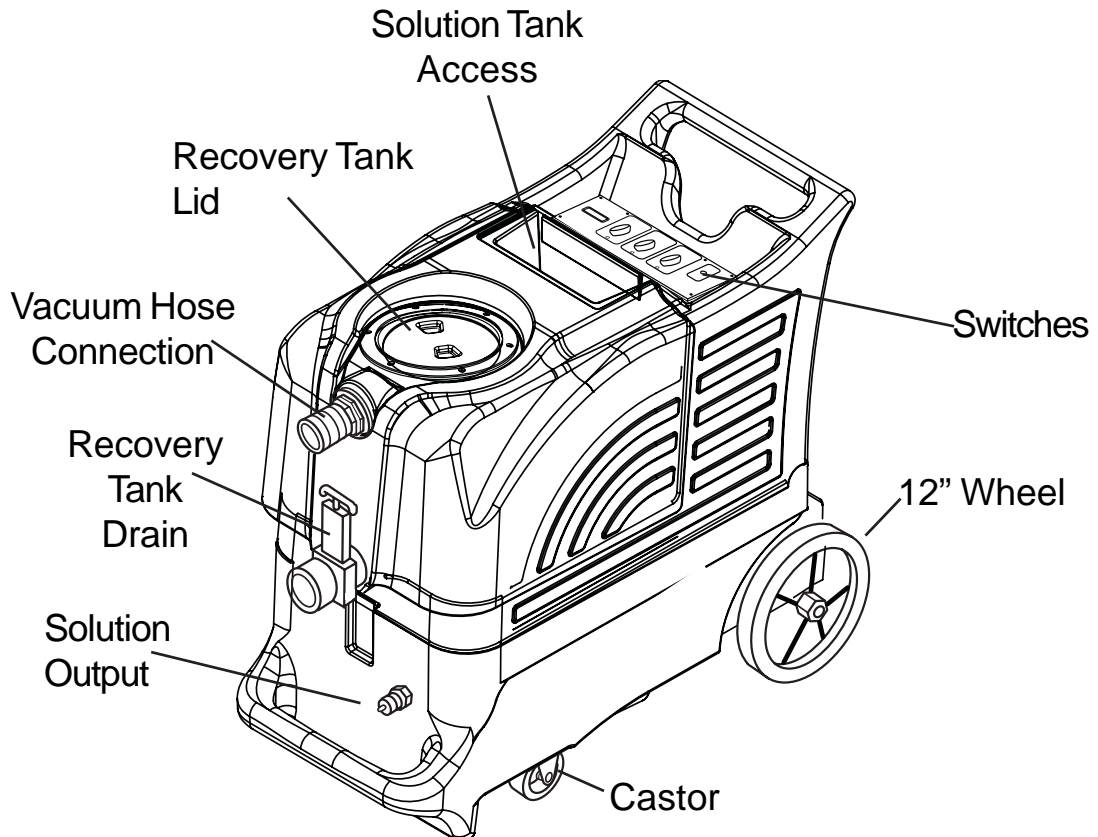
PUMP SWITCH (3):

The pump switch will illuminate when it is activated, and it will turn on the pump.

HEAT SWITCH (4):

The heat switch will illuminate when it is activated and will turn on the heater.

YOUR MACHINE



SET-UP & OPERATION:

1. Before each job, check your machine and tool(s) for cleanliness and completeness.



CAUTION: Always make sure the float cage is clean and the ball can travel freely before turning on the machine.

2. Fill the holding tank with clear water, and prespray with the detergent of your choice. If you choose to add a detergent to the solution tank, be sure to mix well, and always follow the use & dilution instructions on the chemical label.

Although this machine is designed to supply instant hot water, the addition of warm water to the holding tank would increase heater efficiency. Never use water above 130° F/54° C in the solution tank.

3. Turn off all the switches. Plug the power cord into a properly grounded outlet.

IF YOU WANT HEATED SOLUTION: follow Step #4, otherwise go to Step #5

4. Turn on the Heat switch, and wait two minutes for the heat exchanger to reach temperature.
5. Turn on the pump and spray through your tool a few times to fill the lines with solution. Begin cleaning.
6. Refill and empty the tanks as necessary.
7. When finished with the job, vacuum all unused solution into the recovery tank, and dump the liquid from the tank. Clean the tanks and filters. Clean the tool and hoses. Store the machine in a heated location.

AUTO VACUUM SHUT OFF:

When the recovery tank is full, the ball float will shut off the suction to prevent the machine from overflowing.

NOTE: The float may not work if there is foam in the tank. **Always use defoamer to prevent overflow.**

MAXX-100H-Single Cord

PART LIST

120V

<u>ITEM</u>	<u>PART No</u>	<u>DESCRIPTION</u>	<u>ITEM</u>	<u>PART No.</u>	<u>DESCRIPTION</u>
1	903	Drain Gate	24	925	Hose, 3/8" X 11-1/2"
2	187B	Washer, rubber	25	207A	Filter, pump inlet
3	187	O-ring	26	2175	Lid, solution tank
4	185	Nut, 1-1/2"	27	805	Chain, 8"
6	907	Hose Barb, vacuum inlet	28	TKC	Solution Tank
7	1074	Gasket	29	230	Retainer, for power cord pigtail
8	2086	Lid with Ring, 6"	29A	2154	Pig-tail, power cord, 2 ft
10	929B	Ball Float, vac shut-off	29B	2155	Power cord, 25 ft
10A	1140	Elbow, 90° ABS	30	801	Hinge pin
11	921	Elbow, PVC, MPT	31	910-18.50	Axle rod, 18-1/2"
11A	922	Elbow, PVC, FPT	32	2092	Wheel, 12"
12	156	Hose Clamp	33	27A	Axle cap
13	430	Hose, vacuum, 2"ID X 27"	34	905	Castor
14	430A	Hose, vacuum, 2"ID X 14.5"	35	45	Quick disconnect
14A	4404C	Bar, vacuum hose hold-down	36	BKC-1	Base compartment
15	116	Bushing, fiber, heat resistant	37	909A	Catch, for latch
16	92A	Nipple, 1/4 mpt, S/S	38	908	Latch
17	115	Washer, fiber, heat resistant	39	459	Louver, 2-1/2"
18	31	Washer, brass	40	VT-29	Recovery Tank
19	91	Elbow, brass	41	MA-6	Manifold, vacuum
20		Heat Exchanger, complete	42	2013	Gasket, vacuum
20A	FP256	Heat Repair kit	43	408G	Vacuum motor, 3 stage, 5.7"
21	166	Hose Clamp	44	2167+2167-1C	Switch plate (empty)
22	925	Hose, 3/8" ID X 48"	45	1623R	Switch, ON/OFF
23	2007	Pump, 100 psi	46	1603	Strap, cord wrap
23A	108A	Hose barb/90° elbow	47	2050	Gasket, 78-1/2"

MAXX-100-Single Cord

TROUBLE SHOOTING:

<u>IF THIS OCCURS</u>	<u>CHECK THIS</u>
NO SPRAY	Solution tank is empty, or filter is plugged. Clogged spray tip. Pump not running. Valve on wand not operating. Solution hose not completely connected to hose or to machine.
PUMP DOES NOT RUN	This pump has a built-in pressure switch, so it only runs when you release the pressure by spraying. Make sure pressure has been released. Remove the hose from the outlet side of the pump and hold it over a bucket. Turn on the pump to see if water flows through the pump. If so, the problem is not in the pump.
LOW SUCTION	Debris is plugging cleaning tool or vacuum hose. Drain gate is not completely closed or seals are damaged. Vacuum dome is not seated or is damaged.
NO SUCTION	Ball in the float is blocking air flow. Turn off the vacuum so the ball will drop down. No power to motor. Does the switch light up? If not, the switch may be bad or there may be no power getting to the switch. Check wiring connections. Test the switch. Test the vacuum motor.
LOW HEAT	Spraying too long. Try spraying for 8 - 10 seconds, or about three strokes. Heat exchanger needs to be flushed. Wrong tool being used. Too much water passing through. Longer hose or larger diameter hose, than standard.
NO HEAT	Heat is not turned on. No power in the wall outlet - check to see if the breaker has tripped. No power to the heat switch - check wiring for 'opens'. No power out of heat switch. Replace switch. Call your distributor for additional help.

SPECIFICATIONS:

Rotomolded Body: Lifetime Warranty

Vacuum: One, 3-stage

VAC Shutoff: Ball Float

Pump: 100 psi, demand diaphragm pump

Waterlift: 137"

Heat: 180° F, Maximum

Heater: 1100 Watts

Wand: Stainless steel, double bend, twin tip

Weight: 85 lbs.

Dimensions: 18W x 38L x 34.5H (inches)